

SPRINGRIDGE RESERVE

TRAILS MASTER PLAN - OCTOBER 2022

The Trails Master Plan has been updated as of **October 14, 2022**.

The existing trails map has been established by the AVL T (2022) guidelines document as Figure 1.

Modifications to the existing trails are proposed in the proposed trails map in Figure 2 and summarized as follows:

- Removal of dead-end trails throughout existing network.
- Correction for existing trails not represented in the AVL T map that are the current main thoroughfares of the trail network for connecting with Dry Park Rd, have been in place for a long duration as evidenced by signage locations, and provide significant benefits for trail user and traffic safety at the intersection with Dry Park Rd:
 - Dry Park Rd eastern connection
 - Dry Park Rd western connection.
- Addition of proposed location of picnic table.
- Addition of existing trail sign locations.
- Requested allowance of the identified trail location for year-round usage, while respecting seasonal closures of the remaining trails and conservation easement (CE) for habitat purposes.
 - The identified segment of trail is the only portion that has historically seen winter usage by residents.
 - Winter usage of this trail spur is highly valued by residents.
 - This segment is located directly adjacent to lots and is affected by residential light and noise.
 - This area is not regionally-rare over-wintering habitat within the CE; the area represents only a small fraction of the overall CE that meets similar CPW habitat criteria.
- Trail redirect to avoid private property encroachment near the utility corridor west of Dry Park Rd.

Trails maintenance, access, and definitions have been provided in the draft “SRR Trails Guidelines” for review and comment by AVL T.

Sincerely,

Members of SRR Trails Committee

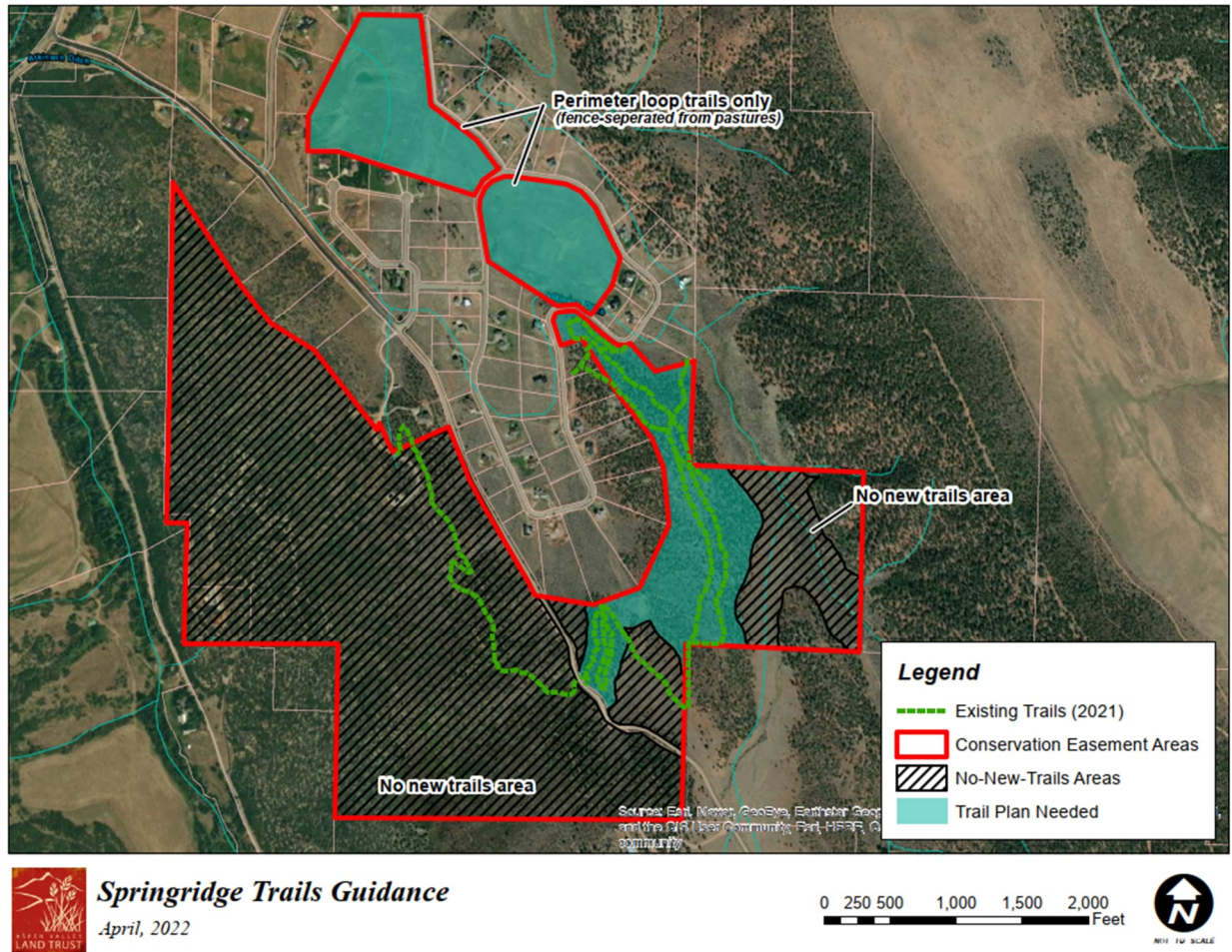


Figure 1. Existing Trails Map (AVLT, 2022)

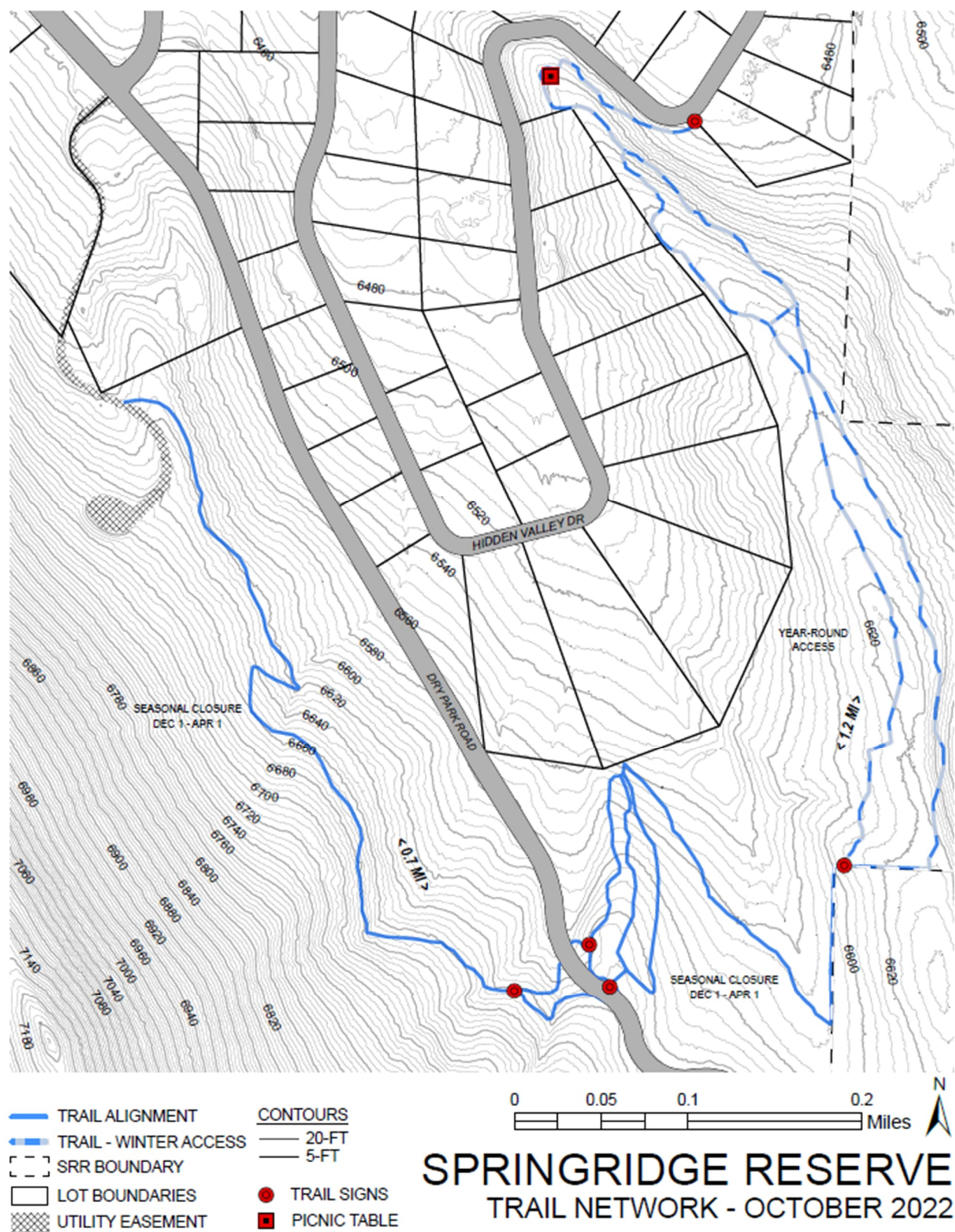


Figure 2 – Proposed Trails Map